



24 Dawbiney Avenue, Craighburn Farm

3 2 2

Popular Design – Feels Brand New

This great-value home lives in a central position just a short walk to the pond and reserve walks. It is a family home first but will definitely appeal to couples looking for a spacious, modern and hassle-free lifestyle. Built in 2013 and used by Oakford Homes as a display, this fantastic home has never been lived in and could be all yours.

Inside, the smart split-level design wastes no space and the land also provides two zones to enjoy outdoor living. You don't feel closed in!

This is Versatile Living...

Three fabulous areas will make everyday living and entertaining a breeze. Adjacent to the formal entry there is a separate lounge retreat, you will love the way the stylish open-plan kitchen combines with everyday dining, the way the main living area is extended by a fantastic alfresco... while downstairs there is a fabulous games room/retreat!

In the main living areas, quality laminate timber flooring creates that homely feeling and provides the perfect contrast to the fresh and modern look. Bulkhead ceilings are an attractive feature and powder-coated bi-fold doors work beautifully to bring in the outdoors. Imagine installing some automated sunscreen blinds to the alfresco... it will take this great space to a whole new level.

Three bedrooms and a study...

The main bedroom features a large spa-bathroom with double vanity, it has a big walk-in robe and is complemented by a separate study. Bedrooms two and three have built-in robes, they share a three-way main bathroom and a cosy computer nook at the top of the stairs. All bedrooms and both bathrooms have attractive plantation shutters... they look great!

Extra Space...

Downstairs is the fabulous games room/retreat that could double as a home theatre. It is a spacious room with large doors that open to a flat terrace and a green garden setting. There is a quest toilet with vanity, a laundry

Land Area 440 sqm

\$720,000 - \$790,000

ID# 1740

Open for Inspection

By Appointment



Stephen Ring

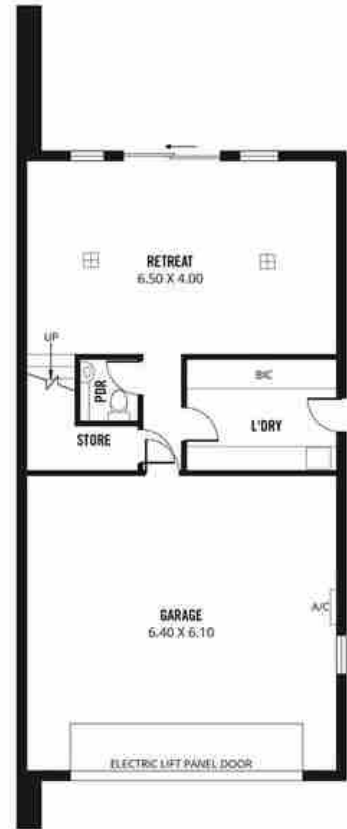
8370 3211

0417 866 344



GROUND FLOOR

UPPER LEVEL



LOWER LEVEL



Scale in metres. This drawing is for illustration purposes only. All measurements are approximate and details intended to be relied upon should be independently verified.

Produced by The Fotobase Group