



14 Sturt Avenue, Hawthorndene

4 2 4

Character, Classic Features and Captivating Gardens

This fine home lives in beautiful part of the Dene, just a few minutes from Blackwood Village and the train for town. The 636sqm corner site provides separate access to two garages, and there is another flat driveway created just for the boat, caravan or camper-trailer!

While this is a family home it may especially be appealing to couples searching for a peaceful place to live and land that is not too large or too small. Behind the white picket-fence the gardens are a real treat and you will delight in the way greenery finds its way through nearly every window in the home. Whether it be under the veranda or outside there are secret spots where you can simply be at home in the sanctuary of lush gardens and bird-life. It is hard to not fall in love.

Your new home was built by the current owners in 1990. A lovingly cared for home and presented for you to simply move in and get on with living.

Designed over two levels with the main bedroom ideally being downstairs, there are three or four bedrooms altogether. The main bedroom has a walk-in robe & ensuite, while bedrooms two and three upstairs are quite spacious, have built-in robes, and share a large study/retreat. With their own bathroom and separate toilet nearby, the children, teenagers or your guests will love it!

Staying upstairs, a big feature of this home is the superb loft-style retreat and music room. Cypress Pine hardwood flooring shines throughout on this level, but in this beautiful room it is exquisite. Together with the neutral tones, lead-light and timber highlights, dormer windows and an outlook to greenery, it all seems to harmoniously create a feeling that will leave a lasting impression.

Downstairs is set-up for practical everyday living and entertaining. The large kitchen is in impeccable condition and is open plan to an everyday dining area. There is a separate lounge room with French doors that open to the veranda and a separate formal dining room for those special occasions. This spacious dining room could have a variety of different uses for you to decide. There is a third toilet downstairs adjacent to the laundry.

Land Area 636 sqm

ID# 1761

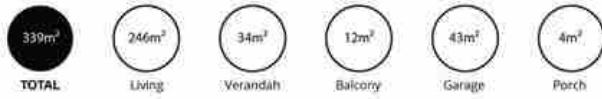
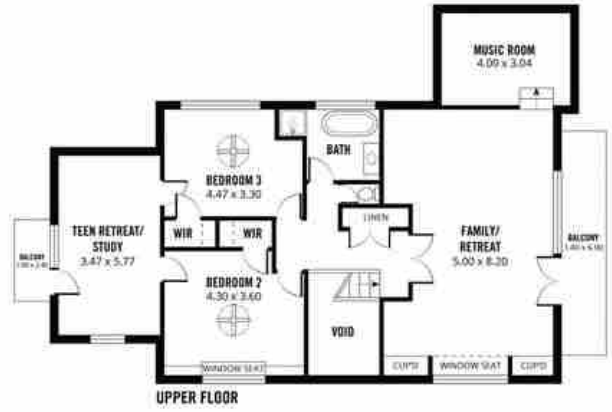
Open for Inspection
By Appointment



Stephen Ring
8370 3211
0417 866 344



John Ring
0409 703 211



Scale in metres. This drawing is for illustration purposes only. All measurements are approximate and details intended to be relied upon should be independently verified.