

43 Wattlebury Road, Lower Mitcham

3 1 2

Opportunity knocks in very well regarded suburb.

LIVE IN OR DEVELOP. The choice is yours.

Freestone fronted residence on generous 962m² Allotment with wide 20.11m Frontage.
Zoned Residential (Central Plains) Policy Area 8
Potential subdivision site for two new homes.
(Subject to Mitcham Council Development Consent)

Current 1950's Residence includes:-

- 3 Bedrooms
- Updated bathroom
- Lounge and Dining Room
- Polished timber flooring
- Large detached rumpus room
- Dual driveway
- Double carport
- Plus 3 sheds

Lower Mitcham is a very tightly held suburb for good reasons:-
Close to good schools, transport, Mitcham Shopping Centre, easy access to the CBD.

A wonderful investment opportunity not to be missed.
Phone today for an appointment to view.

Land Area 962 sqm

\$760,000 - \$830,000

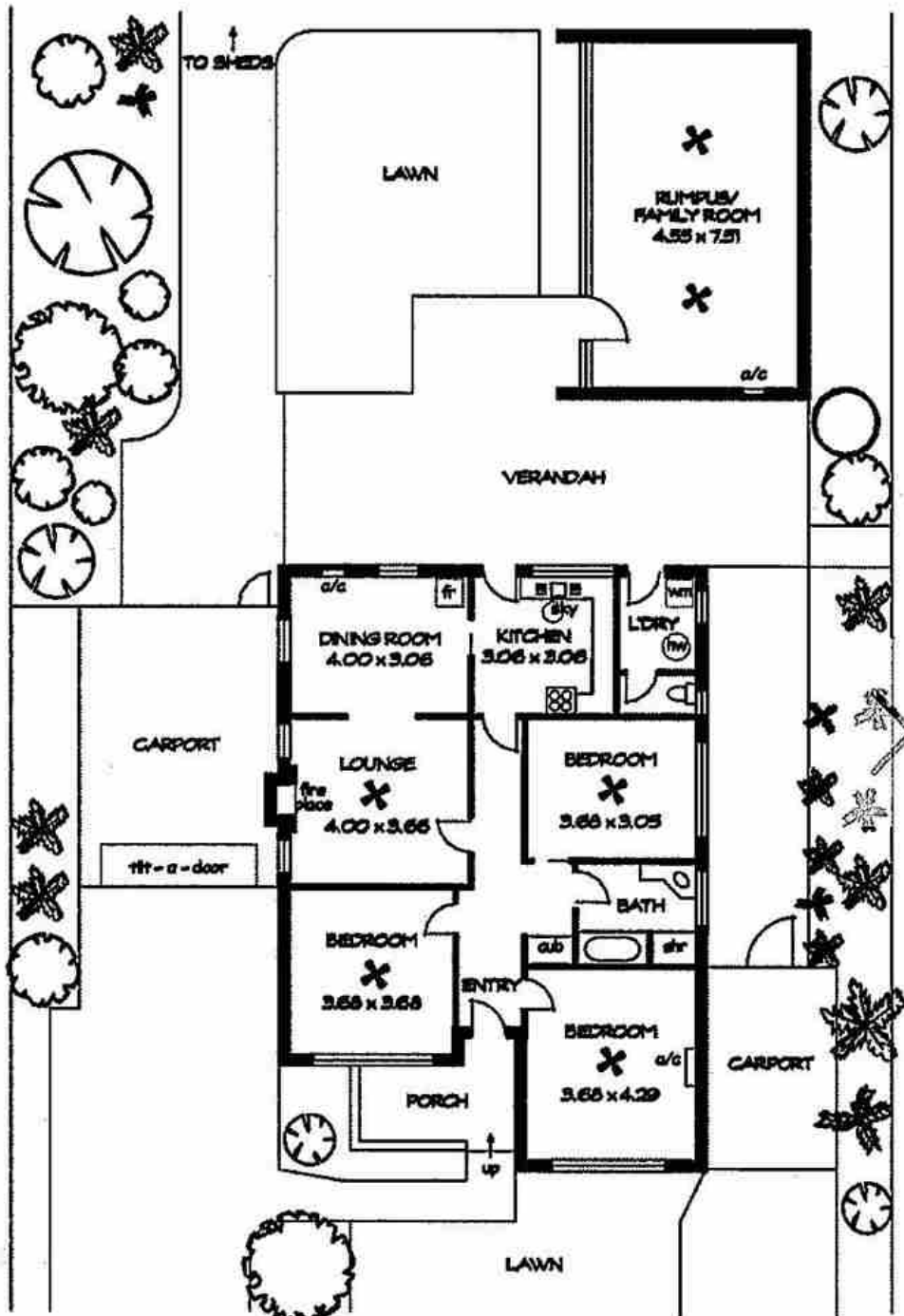
ID# 1779

Open for Inspection

By Appointment



Kym Wellford
0427 929 599



AREAS (approx)	m ²
LIVING:	15.3
RUMPUK:	41.0
TOTAL	156.3

